



MATERIALS TESTING

Solutions for Advanced Materials



Intec's Material and Structural test labs combine state of the art ISO/NADCAP certified facilities to evaluate both materials and structural elements.

Whether performing an FAA certification program, full scale component testing, material allowables generation or QA testing, Intec can do the job.

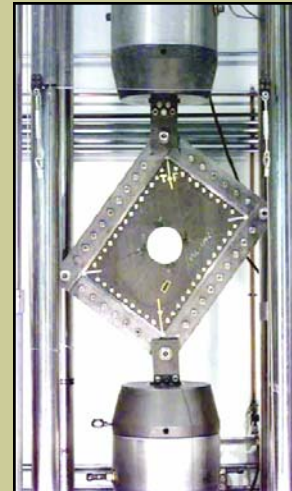
**INTEGRATED
TECHNOLOGIES, INC.**

1910 Merrill Creek Parkway
Everett, WA 98203

Phone: 425-293-0340

Fax: 425-293-0341

Email: rlamantea@in-tec.com



FATIGUE:

Multiaxial, 50g to 600 kips,
-450°F to 1800°F.

Example Modes:

- Constant Amplitude
- Spectrum
- Da/dN Crack Growth
- Thermal Mechanical
- Rotational
- Torsional

STATIC:

Multiaxial, 50g to 2.5Mlbs.,
-450°F to 1800°F. Environ-
mental Conditioning

Example Modes:

- Tension
- Compression
- Flexure
- Shear
- Fracture
- Impact, Low & High Speed
- Bearing
- Creep, Relaxation
- Adhesives

PHYSICAL PROPERTIES:

Void, Density, Volume Fraction (Resin Digestion)

Gel time, Flow, Heat Distortion, De-ply

Flammability, Out gassing

Thermal Analysis (DSC, DMA, TGA,CTE, CME)

Photo microscopy, SEM

NDE: A & C scan, TTU, Pulse Echo, Eddy Current, Thermography.

ENVIRONMENTAL EXPOSURE:

Thermocycling

Thermal Shock

Hydro-Thermal Cycling

Humidity Exposure

Salt Spray

Fluids Exposure



INTEGRATED TECHNOLOGIES, INC.

MATERIALS TESTING

Solutions for Advanced Materials

Selected Certifications:

Boeing D1-9000 Compliant

**NADCAP 2004 – SAE
AS-7101**

ISO/IEC 17025- NADCAP
Materials Test Lab Accreditation
(National Aerospace and
Defense Contractor
Accreditation Program)

Boeing D1-4426
“CQS” Quality Standard

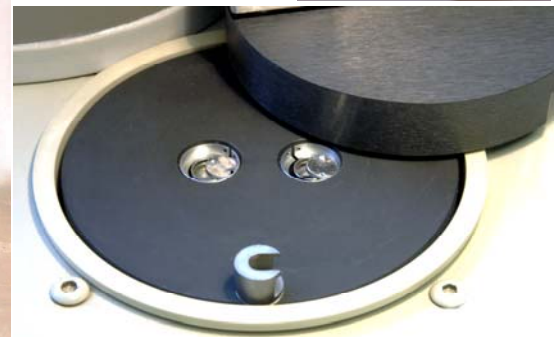
Boeing Helicopter
PVA 8-4462-BAT-02-34

Sikorsky
(Lab 9 Composite Testing)

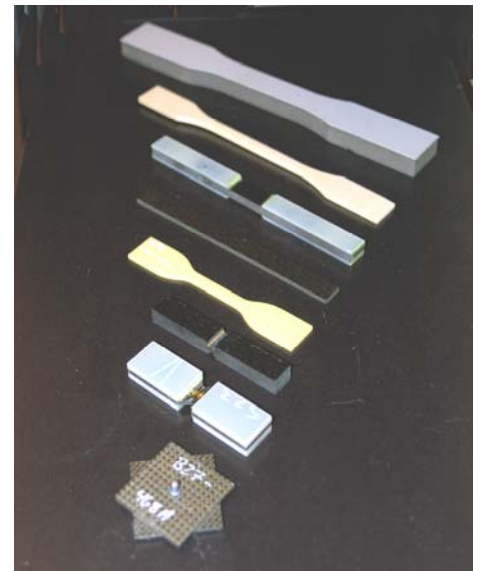
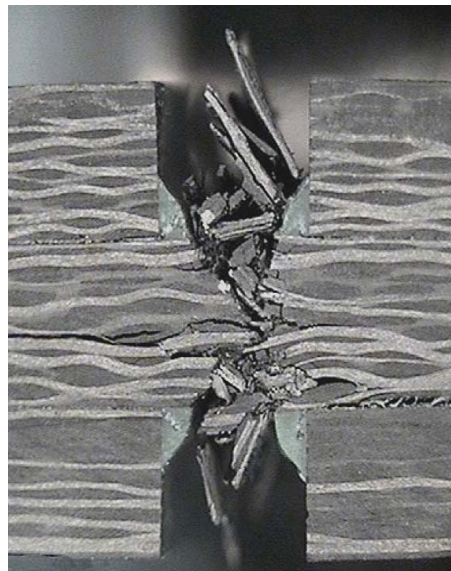
Kaman Aerospace Corporation

Bell Helicopter
QPS101 & BPS-4416
BPS 4511 & 4518

Mil-I-45208, Mil-Q-9858



- **FAA Qualification Program Design**
- **MIL-17, DOE Statistical Data Reduction**
- **Full Digital Reporting**
- **FAA Conformity**



INTEGRATED TECHNOLOGIES, INC.

1910 Merrill Creek Parkway
Everett, WA 98203

Phone: 425-293-0340

Fax: 425-293-0341

Email: rlamantea@in-tec.com

