

INTEGRATED TECHNOLOGIES, INC.



Structural Testing

Solutions for Advanced Materials

Intec's Structural Test Facility supports a wide range of certification, research and proof testing specializing in static and fatigue research and certification of large composite structures. Intec has a full range of actuators, load cells and standard reaction fixturing for a large variety of structural shapes.

FAA DAR CONFORMITY AND DER WITNESSING

Intec's in-house engineering group supports design and structural analysis (FEA) of load introduction and reaction fixtures through solid modeling, assuring stiffness and strength while providing easy integration with component models.



Intec's Structural lab combines **ISO** compliant, **NADCAP** certified facilities to evaluate both materials and structural elements.

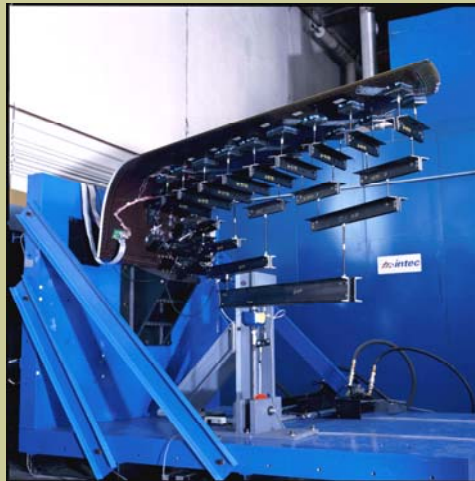
INTEGRATED TECHNOLOGIES, INC.

1910 Merrill Creek Parkway
Everett, WA 98203

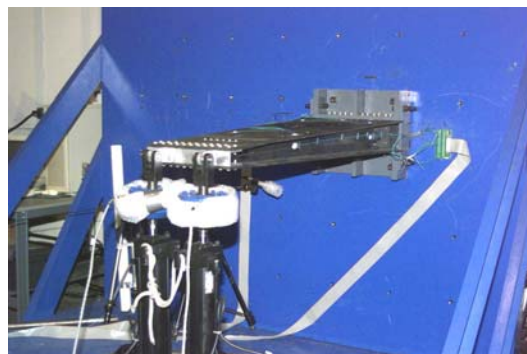
Phone: 425-293-0340

Fax: 425-293-0341

Email: rlamantea@in-tec.com



737 BBJ WINGLET TESTING
Static Multi-axis FAA Certification Test



INSTRUMENTATION

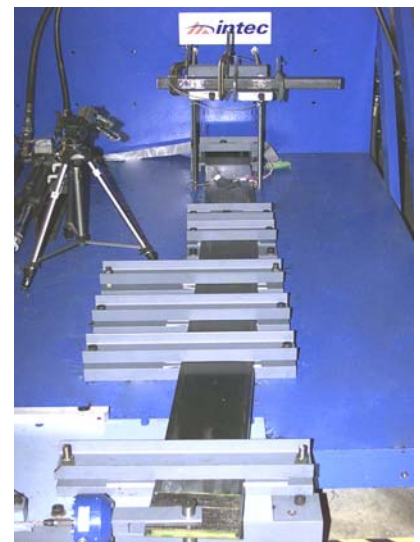
- Over 500 Channels of Data Acquisition
- In-situ NDE Analysis
- Growth Detection (Acoustic, Crack Growth)
- High-Speed Video and Photography
- Shadow and In-plane Moiré, Photo Elasticity

FACILITY

- Strong Backs, Load Floors
Floor-A 25'l, 13'w, 13'h, 220kip load points
Floor-B 10'l, 8'w, 6'h, 75kip load points

Custom Work Spaces Available

- Multi-axis (up to 6 axis)
- Controlled Environment
- Multi-tier Wiffle Tree Loading
- Vibration Testing
- In-situ Impact, Internal Pressurization



INTEGRATED TECHNOLOGIES, INC.

Structural Testing

EXAMPLE TEST PROGRAMS

Solutions for Advanced Materials

Selected Certifications:



Boeing D1-9000 Compliant

NADCAP 2004 – SAE AS-7101
ISO/IEC 17025- NADCAP
Materials Test Lab Accreditation
(National Aerospace and Defense
Contractor Accreditation Program)

Boeing D1-4426 “CQS” Quality
Standard

Boeing Helicopter PVA 8-4462
BAT-02-34

Sikorsky (Lab 9 Comp. Testing)

Kaman Aerospace Corporation

Bell Helicopter QPS101 & BPS-4416,
BPS 4511 & 4518

Mil-I-45208, Mil-Q-9858

INTEGRATED TECHNOLOGIES, INC.

1910 Merrill Creek Parkway

Phone: 425-293-0340

Fax: 425-293-0341

Email: rlamantea@in-tec.com



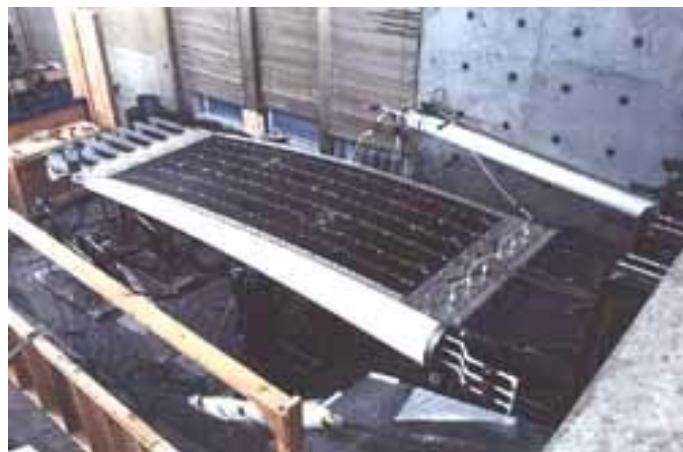
NOTAR TAILBOOM
Static Multi-axis AS4/APC-2 Proof Test,
64 Strain Channels, Three Axis, 237% of
Limit Load



737 Blended Winglet
Test Set-up Side View

RELATED PRODUCTS & SERVICES

- Fabrication of Parts & Components
- Design and Stress Analysis
- Materials Characterization
- Fixture Machining



COMPOSITE WING BOX
Static Aerodynamic and Internal Pressurization,
170” Long 60” wide, 20” deep, 5M in-lbs Reaction
Fixturing, Four Axis, 379 Strain Gages, Internal
Pressurization

